

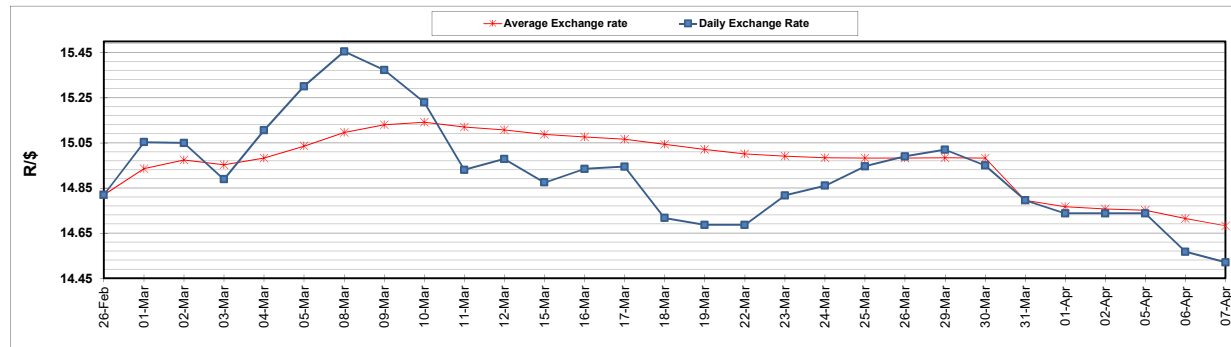
	PETROL 95 ULP	PETROL 93 ULP & LRP	DIESEL 0.05%	DIESEL 0.005%	ILL. PAR.
GAUTENG PUMP PRICE (SA c/l) AS FROM 07/04/2021	1,732.000	1,710.000	-	-	-
WHOLESALE PRICE (SA c/l) AS FROM 07/04/2021	-	-	1,477.620	1,480.020	880.488
SINGLE NATIONAL MAXIMUM RETAIL PRICE	-	-	-	-	1,106.000
BASIC FUEL PRICE - 07/04/2021 (SA c/l)	694.560	680.817	631.703	633.942	613.620
PRESS RELEASE CONTRIBUTION TO BFP 07/04/2021 - 07/04/2021 (SA c/l)	736.170	724.170	690.630	693.030	667.128
UNIT OVER/(UNDER) RECOVERY - 07/04/2021 (SA c/l)	41.610	43.353	58.927	59.088	53.508
AVERAGE BASIC FUEL PRICE 31/03/2021 - 07/04/2021	713.763	698.726	638.839	641.341	621.261
AVERAGE UNIT OVER/(UNDER) RECOVERY 31/03/2021 - 07/04/2021	(36.759)	(29.556)	20.958	22.523	17.534

ANALYSIS MOVEMENT OF AVERAGE OVER/(UNDER) RECOVERY

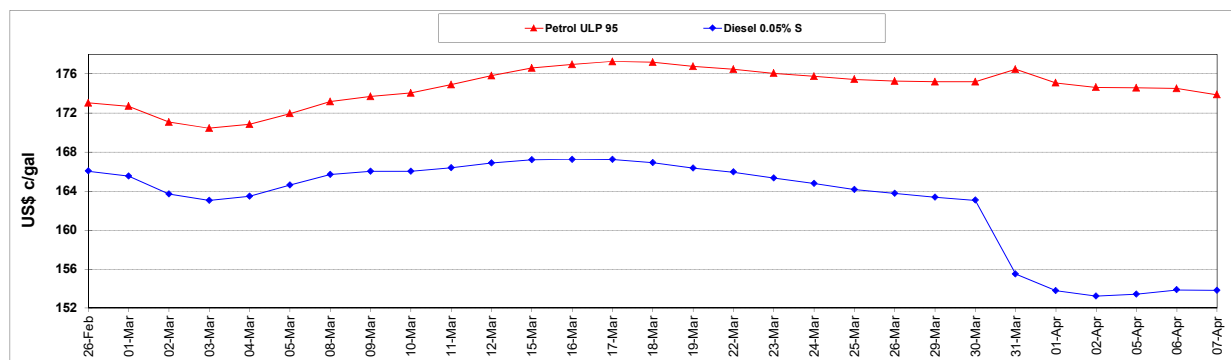
	PETROL 95	PETROL 93	DIESEL 0.05%	DIESEL 0.005%	ILL. PAR.
- MOVEMENT IN INTERNATIONAL PRODUCT PRICES	(51.358)	(43.847)	7.892	9.405	4.827
- MOVEMENT IN EXCHANGE RATE	14.598	14.291	13.066	13.117	12.707
AVERAGE UNIT OVER/(UNDER) RECOVERY 31/03/2021 - 07/04/2021	(36.759)	(29.556)	20.958	22.523	17.534

R/\$ EXCHANGE RATE - (R/\$14.5208 - 07/04/2021)

EXCHANGE RATE USED IN BASIC FUEL PRICE



INTERNATIONAL PRODUCT PRICES OF BASKET USED IN BASIC FUEL PRICE



BASIC FUEL PRICE IN SA CENTS PER LITRE

